



One Company | Thousands of Components | Custom Solutions

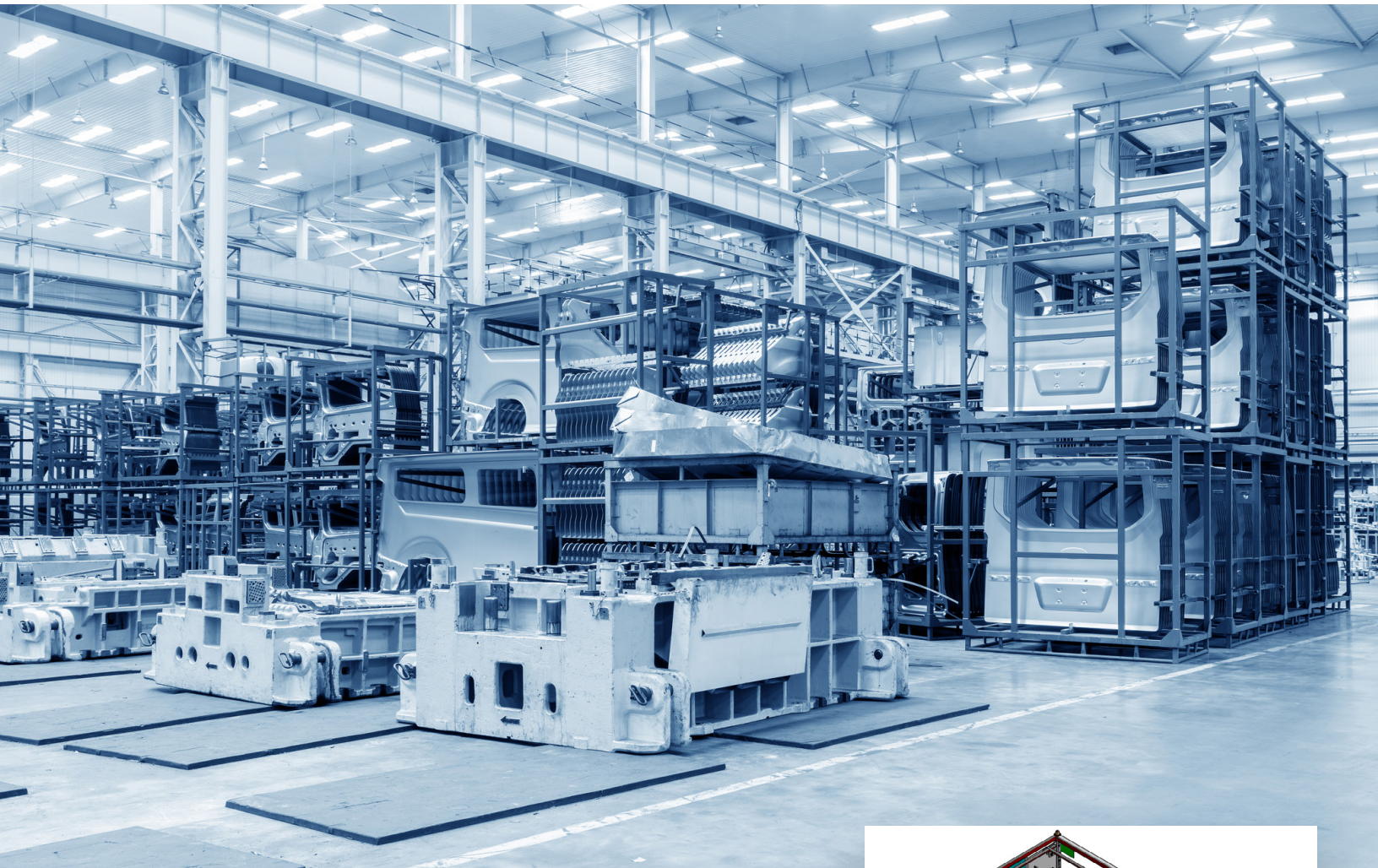


JWF | RackTech®

**CUSTOM GAS SPRING DESIGN
FOR AUTOMOTIVE & MATERIAL
HANDLING RETURNABLE RACKS**

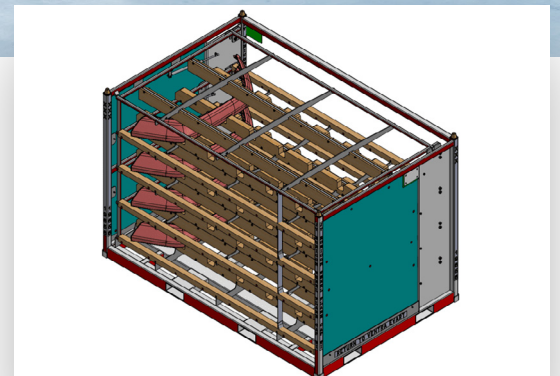
SAFE, FUNCTIONAL & ERGONOMIC **RETURNABLE** RACK SOLUTIONS

JWF Technologies' RackTech™ brand is the top choice for custom gas springs used in returnable rack solutions for automotive and material handling applications. Our team of experts can perform a detailed assessment of your current system, identify opportunities for improvement, and design a custom gas spring solution that makes your application safer without sacrificing load capacity, automation, speed, ergonomics or material safety requirements.



TRUSTED BY **TOP MANUFACTURERS**

Our decades of expertise in custom gas spring returnable rack solutions has earned us the industry's trust, including many of the top auto manufacturers who rely on our solutions to deliver uncompromising performance in demanding environments, tailored to their unique needs.



OUR PROCESS



CUSTOM GAS SPRING SOLUTIONS

1

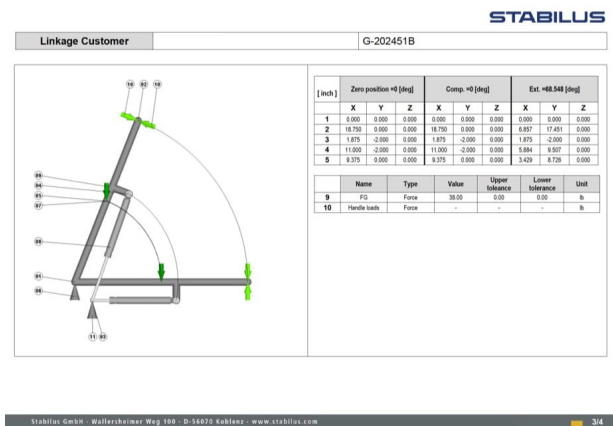
RESEARCH & REQUIREMENTS

Our process begins with an assessment of your specific production and material handling system requirements. We gather all the specifications needed for your custom rack design.

2

DEVELOPMENT

Our team of engineers work alongside OEM design houses and fabricators, and utilize our patented EIVO design software to match rack design specifications with custom mounting points. By simulating the function of the rack lid/shelf we can provide specific gas spring part number and mounting locations.



3

ON-SITE RACK REVIEWS

Post-assembly, we perform an on-site simulation review to ensure your returnable rack solution meets the ergonomic, load capacity, and speed requirements for your application. This on-site review ensures your solution meets the original specifications.

4

CERTIFIED SUPPORT

JWF is here to support your future needs with our vast inventory of industry-leading components and responsive customer service dedicated to keeping the supply chain moving for the life of every program.

JWF TECHNOLOGIES
6820 FAIRFIELD BUSINESS DR.
FAIRFIELD, OH 43104
(513) 769-9611
www.JWFTechnologies.com

REQUESTED BY: _____
DATE: _____
PROJECT ENGINEER: _____
PROGRAM NAME: _____ RACK #: _____
SHELF LOCATION: ☐ TOP ☐ TOP ☐ 1st ☐ 2nd ☐ 3rd ☐ 4th ☐ 5th
(CHOOSE OPTION THAT APPLIES BEST)

FABRICATOR / DESIGN HOUSE: _____
END CUSTOMER: _____
PROJECT NAME: _____
SIMULATION NUMBER: _____
JWF REP AND DATE: _____

RACK REVIEW CHECKLIST

	SIMULATION		FINDINGS		NOTES
	X	Y	X	Y	
2 HANDLE RADIUS					
3 FIXED POINT					
4 MOVING POINT					

OPENING ANGLE:
SIMULATION: _____
FINDINGS: _____

AUTO RISE:
SIMULATION: _____
FINDINGS: _____

HANDLE LOAD:
SIMULATION: _____
FINDINGS: _____

GAS SPRING VERIFICATION:
SIMULATION: _____
FINDINGS: _____
MTD ROD DOWN: ☐ YES ☐ NO

NOTIFY CUSTOMER REP OR FABRICATOR AND NOTE ANY OF THE FOLLOWING CONDITIONS:
☐ Any damage/paint on spring
☐ Extraordinary temperature condition
☐ Observe rack for gas spring clearance issues
☐ Painted ball studs
☐ Is ball stud properly seated?
☐ Is gas spring protected by the rack?

STANDARD COMPONENTS

IN-STOCK & READY TO SHIP

EXTENDED LENGTH	STROKE	END FITTING	PART #	FORCE
8x19				
9.6" 243.5 mm	3.1" 79.5 mm	10mm	7416SY	230 N 52 lbs
			7417ST	370 N 83 lbs
12.2" 309.5 mm	4.3" 109.5 mm	10mm	865449	150 N 34 lbs
			865688	270 N 60 lbs
			865927	400 N 90 lbs
			866166	510 N 112 lbs
			866405	600 N 135 lbs
			297105	645 N 145 lbs
			866644	780 N 175 lbs
19.1" 485 mm	7.9" 200 mm	10mm	151318	210 N 47 lbs
			151557	310 N 70 lbs
			152513	360 N 81 lbs
			151796	410 N 92 lbs
			814301	500 N 112 lbs
			152035	510 N 115 lbs
			152274	610 N 137 lbs
19.7" 500 mm	7.9" 201 mm	10mm	1781SH	550 N 124 lbs

10x22 with 10 mm ends				
19.1" 485 mm	7.75" 197 mm	10mm	7617SF	710 N 160 lbs
			7618SA	810 N 182 lbs

10x22 with 13 mm ends				
14.5" 368 mm	5" 127 mm	13 mm	7781SN	1150 N 259 lbs
20.2" 512.5 mm	7.9" 200 mm	13 mm	690021	680 N 153 lbs
			690499	850 N 191 lbs
			649391	1090 N 245 lbs
			649630	1200N 270 lbs

14X28				
25" 635.5 mm	9.8" 250 mm	16mm	0896SE	1500 N 337 lbs



One Company | Thousands of Components | Custom Solutions

Cincinnati | Cleveland | Detroit | Ontario
3065 Moser Ct. Hamilton, Ohio 45011

Toll Free: (877) 769-9611 | JWFtechnologies.com